

Algebra 1-Review Answers

2) 76

4) $\frac{163}{30}$ or about 5.43

7) $-\frac{251}{14}$ or about -17.93

8) 512

9) 43.6

10) 1

12a) 11 zeros

12b) Sample: The number of zeros is one less than twice the term number.

12c) $2n-1$

15) They appear not to be equivalent

17) 5

19) -10

21) 2

24) $r=25$; m.a.d. = 0.89

25) $r=28$ points; m.a.d. = about 9.42 pts.

26) $x + -y + -z$

28) D

29) true

30) $(7d + 2) \cdot \frac{1}{4st}$

32) Associative Property of Addition

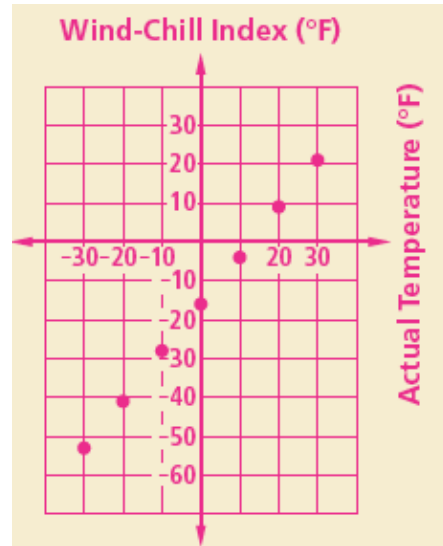
33) Commutative Property of Multiplication

34a) no

34b) Sample: Wesley should have written $2 + (-x + 3)$

35) Transitive property of Equality

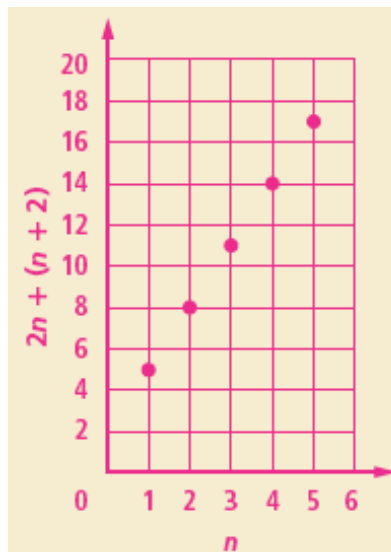
36) $6r + 3p - i$



40)

n	$2n + (n + 2)$
1	5
2	? 8
3	? 11
4	? 14
5	? 17

41a)

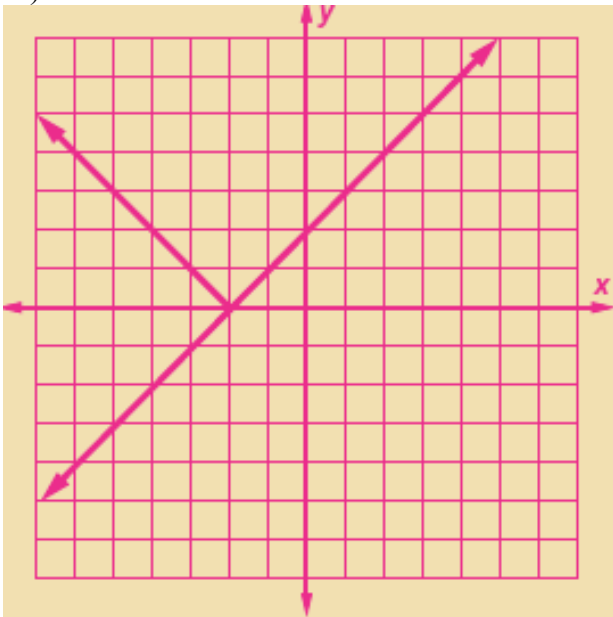


41b)

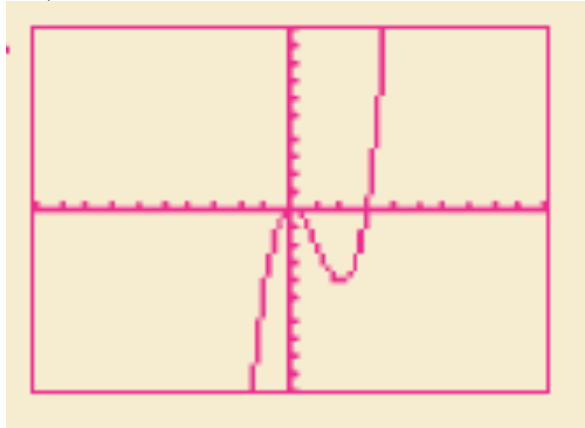
41c) 35

Algebra 1-Review Answers

43) NO!



46a)



46b) Samples:

$$X_{\min} = -0.4, X_{\max} = 0.4,$$

$$Y_{\min} = -0.2, Y_{\max} = 0$$

44) They appear equivalent

