

Algebra 1-6 Answers

3a) 75

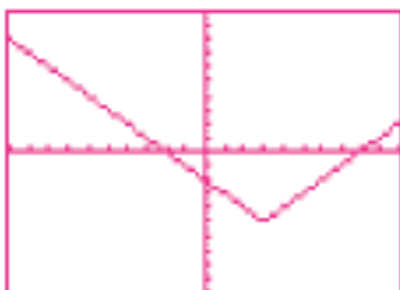
3b) 75

3c) 5

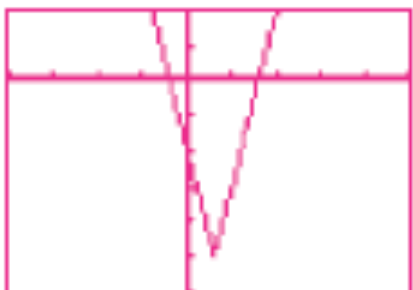
3d) 75

7) 1

9) Sample: $t = -3$ (any negative value)



11a)



11b)

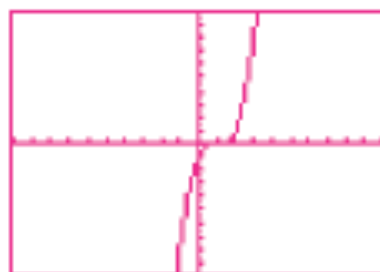
11c) Xmin: -15, Xmax: 0, Ymin: -6, Ymax: 10

12) -15, 15

13) 5

14) No values of z

15) $\frac{1}{2}$



17a)

17b) (1, 0)

20a) Sample: $x=1$ & $y=2$ yields $-1=1$ which is not true!

20b) Subtraction is not commutative

21a) 12

21b) 1

22) $\{x \mid x \geq 0\}$. Could also say Whole numbers.