

9a) $S = 98.5$

9b) 1997

10a) 1998

10b) The deviation from the mean in 1998 was small.

11a) 2000 & 2001

11b) Bad news: snow depths below normal could affect snow tourism & also result in ilower water supply from runoff.

12) $y = 12$

13) $x = -6$

14a) $y = -13$

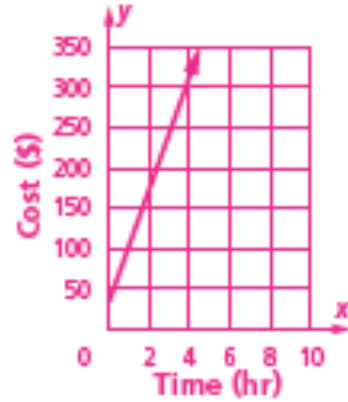
14b) $x = 7$

15) $x; y$

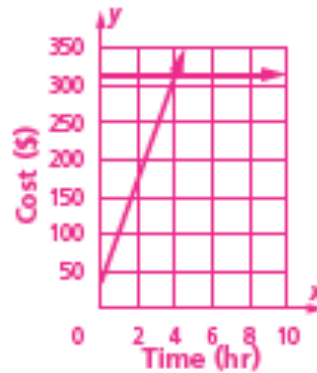
17) $(7, 5)$

20) $y = m$

21a) $y = 35 + 70x$



21b)



21c)

21d) 4 hours

21e) solving $35 + 70x \leq 315$ yields $x < 4$ hr.

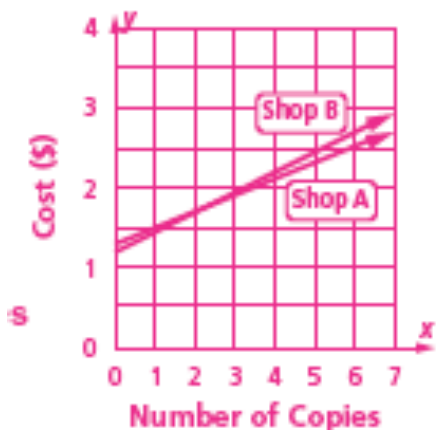
23) \$16,037.74

25a) $18550 > \frac{1}{4}t$

25b) $I < 74200$

1a) 4 or more copies

1b) 1 or 2 copies



1c)

1d) (3, 1.8)

2a) On the 12th day, there are about 60 lb of each.

2b) Any number from 0 to 12.

2c) $x > 12$